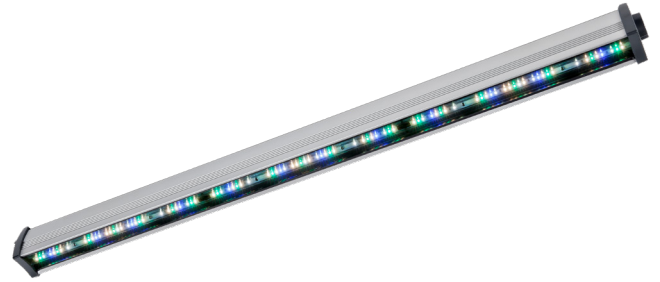




FL100 SUNLIGHT FIXTURE

- ✓ Control of light intensity
- ✓ Spectral distribution similar to the sun
- ✓ Consistent light on the plants due to a patented optical lens system
- ✓ Better plant quality and higher output
- ✓ Long lifetime with no reduction of the light output
- ✓ Well suited for vertical farming, indoor green areas, climate chambers, research and garden centres



The LED fixture replicating the sunlight

About FL100 Sunlight

The FL100 basic fixture can be equipped with a large range of different diodes, and to accommodate an increasing demand from our customers ranging from plant researchers to garden centres, we created a spectrum designed to replicate the light coming from the sun.

- The minimalist design means easy installation using standard connection technology, and with a minimal shadow footprint.
- The natural replacement for the conventional HPS systems
- Get a specific lighting plan based on your plant's need for lighting

Controllable light intensity

One of the major benefits of this fixture is the ability for control.

- Investing in a controllable LED fixture means you always have the option to change the light to keep up with new research findings, a new culture/culture stage, or simply to dim the fixture when less light is required.
- The FL100 Sunlight is recommended for growth chamber applications where natural light is important or for supplementary lighting where colour recognition is important; for instance, in a garden centre.

System for control of the LED installation

- The light intensity can be customized for individual crops in combination with LCC4 climate control systems.
- An alternative to the LCC4 climate control system is a small Control Unit which controls up to 49 fixtures.
- A further alternative is the LED Light Controller, which can be connected with your climate computer from another provider. That way you can maintain the full control of your LED installation.

Future-proof solution

With the long lifetime, resource savings, and improved plant growth, LED is a solid and future-proof investment.

We will gladly assist you with further guidance and a light plan, and of course with an offer, to provide you the full overview of upgrading your business.



SPECIFICATIONS / FL100 SUNLIGHT FIXTURE - VERSION 1.2

Technical specifications

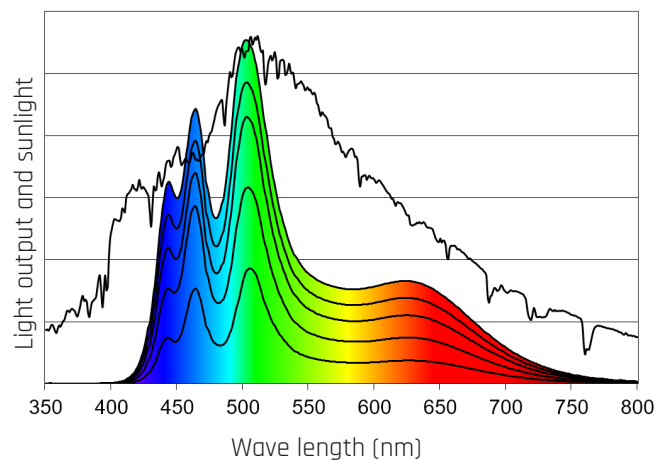
Power input:	400V AC / 50/60 Hz (380 - 480 V AC)
Nominal current:	0.4 A
Power usage:	50 - 150 watt
Light output from fixture:	1.74 $\mu\text{mol/s}$ per Watt
PPF:	261 $\mu\text{mol/s}$
Light output from diodes:	1.91 $\mu\text{mol/s}$
Net weight:	3 kg
Dimensions L x W x H:	1165 x 67 x 90 mm
Operating temperature:	0 - 40° C
Coverage:	Up to 12 m ² (depending on light intensity)
Light modulation range:	From 30 - 100 % intensity
Green / white content:	See table below

% Light in terms of total PAR Light

	Natural sunlight	FL100 Sunlight
400 - 500 nm	33 %	33 %
500 - 600 nm	41 %	40 %
600 - 700 nm	26 %	27 %

When evaluating possible LED solutions it is important to check on two parameters: Temperature of the LED when the fixture is running and the distribution profile on your plants.

The FL100 Sunlight is designed with an optical lens system that enables a traditional installation plan similar to HPS with homogeneous distribution profile on plant level - but with less waste of light.



Spectral distribution of FL100 Sunlight together with a spectral profile of sunlight.

Distributor:

Contact details:

DGT by Senmatic

Phone: +45 64 89 22 11

dgtsales@senmatic.com - www.senmatic.dk

Version: 27092023

Head office:

Senmatic A/S - Industrivej 8 - DK-5471 Søndersø